



A child's soul
needs to be listened to

Interdisciplinary Therapeutic Child, Youth and Family Protection Center

BHIDAPA Bosnia and Herzegovina

Emerika Bluma 9, 71000 Sarajevo

Phone +387 61 773 887

bhidapa.ba



Children, youth and their parents (kindergartens, schools, centers for social work) refer to us with various challenges. If your answer to some of following questions is affirmative, we encourage you to contact us:

- » Do you think that your child is stressed?
- » Does your child have difficulties in tackling schoolwork?
- » Did your child experience a stressful event?
- » Are you worried about your child's reaction to divorce?
- » Did your child experience loss of a loved one?
- » Do you ask yourself if you are a good parent to your child?
- » Are you worried about your child's behavior?
- » Does your child experience difficulties in relating to their peers?
- » Are you worried about changes in your child's emotions and behavior?

MULTIDISCIPLINARY AND INTERSECTORAL COOPERATION

PRIMARY, SECONDARY AND TERTIARY PREVENTION

ACCREDITED EUROPEAN EDUCATIONAL CENTER

Integrative Child and Adolescent Psychotherapy, Counseling and Psychotherapy, Therapeutic skills and techniques in working with children, Supervision

INTERDISCIPLINARY THERAPEUTIC CENTER FOR PROTECTION OF CHILDREN, YOUTH AND FAMILY

Child Psychotherapists, Child Neuropsychiatrists, Pediatrician, Specialist in Clinical Psychology, Psychologists, Social Pedagogy Specialist, Social Worker, Defectologist/Speech Therapist, Attorney, Children's Board, Youth's Board, Parent's Board

SCIENTIFIC RESEARCH CENTER



Center for Social Work
Healthcare Institutions
Educational Institutions
State Attorney Office
Police

CRISIS INTERVENTION CENTER

CENTER FOR FORENSIC SERVICES

Interdisciplinary therapeutic center for protection of children, youth and family is an association that provides support to children, youth and their families through all three tiers of prevention-focused work.

Support from various developmental age experts, as well as multidisciplinary diagnosis and treatment for children are available at our Centre. All processes are adjusted to children and are in line with scientific knowledge and best-practice policies of similar institutions in the world, and are proven to be the most effective approach in protection of health and wellbeing of children and youth.

BIG THINGS OFTEN HAVE SMALL BEGINNINGS

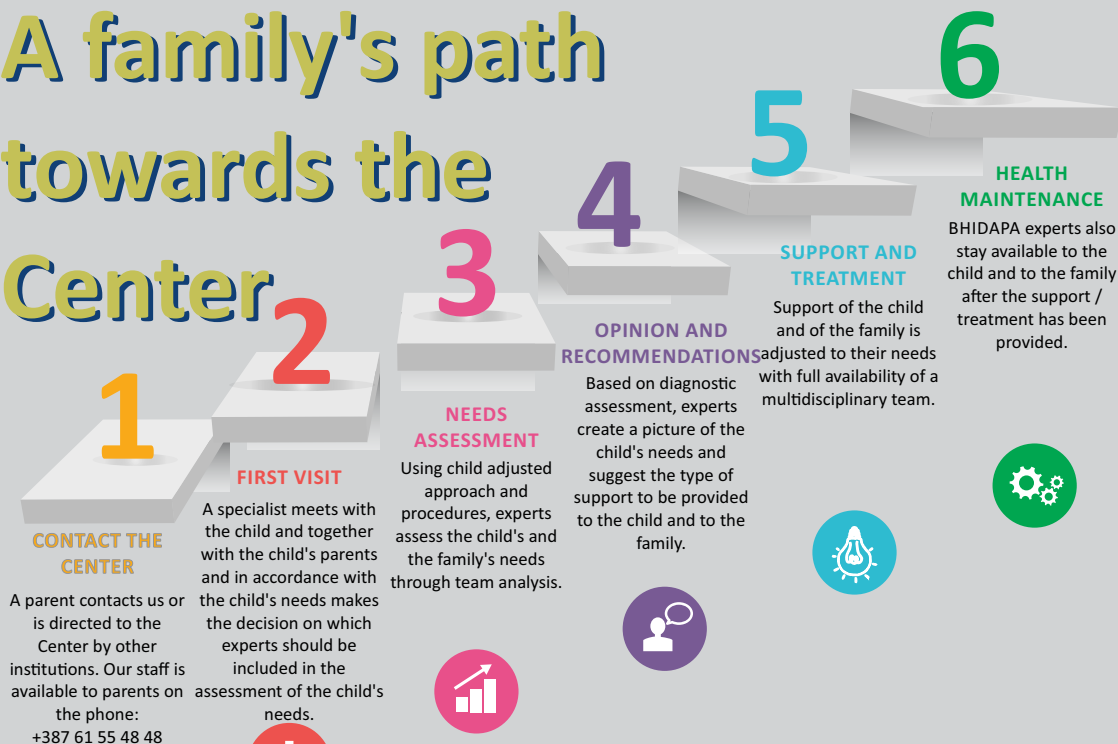
Research shows that adequate support in difficult life situations could prevent many difficulties and that early detection of difficulties in children enables timely provision of support. Give your child (and yourself) professional support in facing life's challenges, in order to prevent possible difficulties. If you have noticed some changes in your child that you are worried about share your doubts with our experts – assess together whether professional support is needed and ask for advice how you can best support your child. (Quote from the movie Lawrence of Arabia, 1962)

B

Y EMPOWERING THE PARENT WE EMPOWER THE CHILD

The environment in which a child is raised has a strong impact on a child. Research shows that support provided to adults from the child's environment is a key factor for the child's recovery. This is the main

A family's path towards the Center



What to say to a child before visiting Center?

“you will talk to someone who helps children”

“you can say whatever you are thinking and feeling”

“you can be yourself and openly talk there”

“no one will force you to do something you don't want to do”





Team of experts which is taking care about children and youth in the Center:

Child Psychotherapists

Pediatrician

Social Worker

Child Neuropsychiatrists

Psychologists

Phonetician

Specialist in Clinical Psychology

Social Pedagogy Specialist

Attorney

The focus of our work is always child and child's best interest.